

FLUID COOLING | Shell & Tube A Series

Features

- ITT Interchange
- **B or C Series is Recommended for New Applications**
- **Competitively Priced**
- Non-Ferrous Construction (Water-to-Water Service)
- 90/10 Copper Nickel Cooling Tubes and Bronze End Bonnets for Sea Water Service
- NPT, SAE O-Ring, SAE Flange, or BSPP Shell Side Connections Available
- End Bonnets Removable for Servicing
- Mounting Feet Included (May be Rotated in 90° Increments)



Ratings

- Maximum Shell Pressure** 300 psi
Maximum Tube Side Pressure 150 psi
Maximum Temperature 300° F

Materials

- Tubes** Copper Nickel
Hubs & Tubesheets Brass
Shell Brass
Baffles Brass
End Bonnets Bronze
Mounting Brackets Steel
Gaskets Nitrile Rubber/Cellulose Fiber
Nameplate Aluminum Foil

SA = NPT Shell side, NPT Tube. Available in 1200 & 1600 models only.

SAF = SAE 4 Bolt Flange (with UNC threads) Shell side connections; NPT Tube side connections. Available in 1200 & 1600 models only.

A = NPT Shell side connections; NPT Tube side connections

AS = SAE O-Ring Shell side connections; NPT Tube side connections

AM = BSPP Shell side connections; BSPP Tube side connections

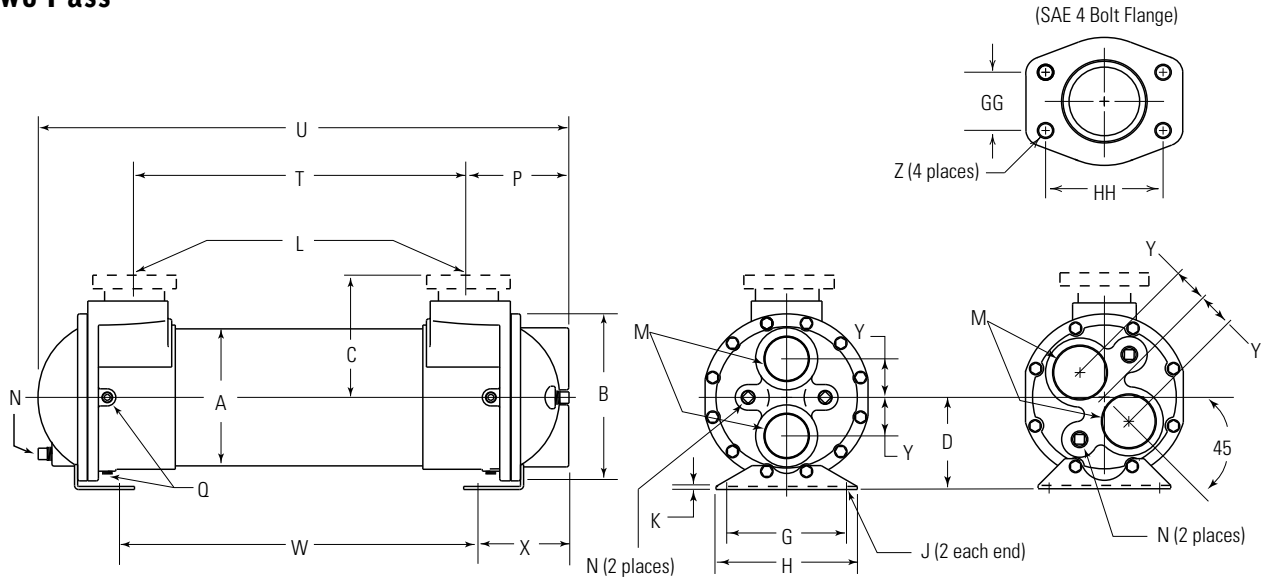
AF = SAE 4 Bolt Flange (with UNC threads) Shell side connections; NPT Tube side connections

AFM = SAE 4 Bolt Flange (with Metric threads) Shell side connections; BSPP Tube side connections

SAE flanges available on some models. Consult factory for details.

Dimensions

Two Pass



**A-600, A-800, A-1000
& A-1600 Series**

A-1200 Series

Flange Size	GG	HH	Z - CF	Z - CFM
1	1.03	2.06	3/8-16 UNC	M-10
1.50	1.41	2.75	1/2-13 UNC	M-12
2	1.69	3.06		
3	2.44	4.19	5/8-11 UNC	M-16

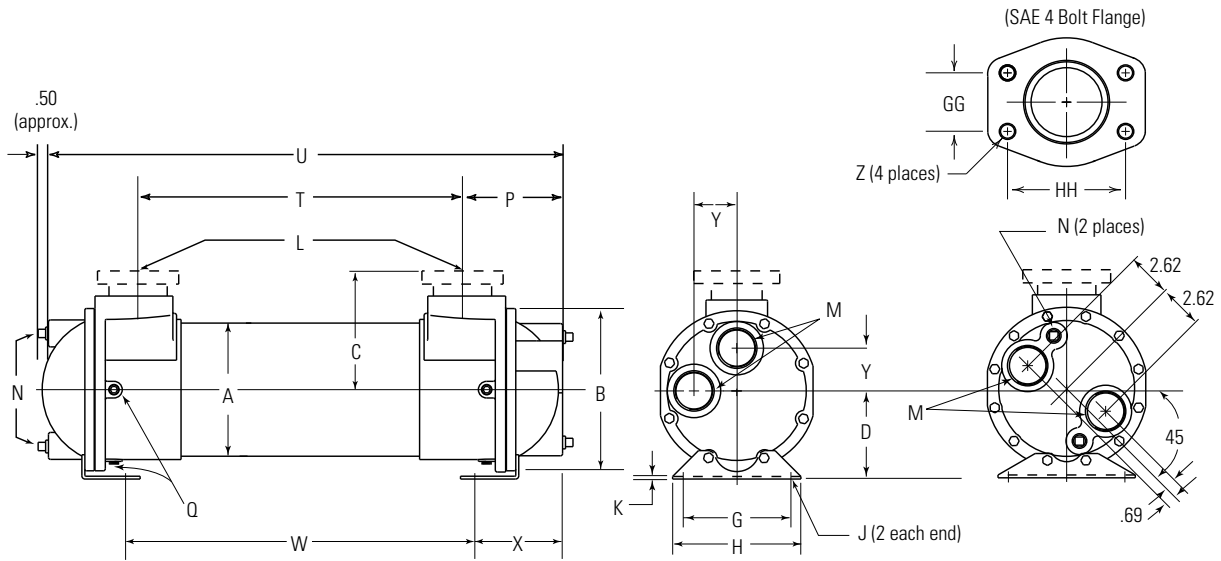
MODEL	A DIA.	B DIA.	C		D	G	H	J	K	L		M NPT	N NPT	P	Q NPT	T	U	W	X	Y
			NPT/BSPP SAE O-RING	SAE 4 BOLT FLANGE						NPT/BSPP FLANGE	SAE O-RING									
A-608	3.12	4.19	2.44	C/F	2.44	2.50	3.50	.38 x .88	.12	1.00	#16, 15/16-12 UNF-2B	1.00		2.44	(2) .25	6.12	10.75	5.47	2.94	1.00
A-614																12.12	16.75	11.47		
A-624																22.12	26.75	21.47		
A-814	4.12	5.88	3.12	C/F	3.50	4.75	.50 x 1.62	.12	1.50	17/8-12 UN-2B	1.25	.38	3.44	(6) .38	11.12	17.62	12.88	2.56	1.19	
A-824															21.12	27.62	22.88			
A-836															33.12	39.62	34.88			
A-1014	5.12	6.50	3.62	4.34	4.00	5.00	.50 x .88	.12	1.50	17/8-12 UN-2B	1.50		3.69		11.12	18.31	11.75	3.38	1.50	
A-1024															21.12	28.31	21.75			
A-1036															33.12	40.31	33.75			
A-1224	6.12	7.50	4.25	4.84*	4.12	5.00	6.00	.12	2.00	#32, 2 1/2-12 UN-2B	2.00		4.25	(6) .25	20.50	28.75	21.50	3.75	1.56	
A-1236															32.50	40.75	33.50			
A-1248															44.50	52.75	45.50			
A-1260	8.00	9.75	5.62	6.12***	5.38	7.00	8.25	.62 x 1.12	.19	3.00	—	2.50	6.00		56.50	64.75	57.50	5.25	2.25	
A-1624															19.00	30.50	20.50			
A-1636															31.00	42.50	32.50			
A-1648	8.00	9.75	5.62	6.12***	5.38	7.00	8.25	.62 x 1.12	.19	3.00	—	2.50	6.00		43.00	54.50	44.50	5.25	2.25	
A-1660															55.00	66.50	56.50			
A-1672															67.00	78.50	68.50			

*SAF-1200 5.88. **SAF-1600 7.38.

NOTE: We reserve the right to make reasonable design changes without notice. Consult factory. All dimensions are inches.

Dimensions

Four Pass



**A-600, A-800, A-1000
& A-1200 Series**

A-1600 Series

Flange Size	GG	HH	Z - CF	Z - CFM
1	1.03	2.06	3/8-16 UNC	M-10
1.50	1.41	2.75	1/2-13 UNC	M-12
2	1.69	3.06		
3	2.44	4.19	5/8-11 UNC	M-16

MODEL	A DIA.	B DIA.	C		D	G	H	J	K	L		M NPT	N NPT	P	Q NPT	T	U	W	X	Y
			NPT/BSPP SAE O-RING	SAE 4 BOLT FLANGE						NPT/BSPP FLANGE	SAE O-RING									
A-608	3.12	4.19	2.44	C/F	2.44	2.50	3.50	.38 x .88	.12	1.00	#16, 15/16-12 UNF-2B	.75		2.31	(2) .25	6.12	10.88	5.47	2.81	1.00
A-614																12.12	16.88	11.47		
A-624																22.12	26.88	21.47		
A-814	4.12	5.88	3.12	C/F	3.50	3.50	4.75	.50 x 1.62	.12	1.50	#24, 17/8-12 UN-2B	.38		3.44	(6) .38	11.12	17.62	12.88	2.56	1.06
A-824																21.12	27.62	22.88		
A-836																33.12	39.62	34.88		
A-1014	5.12	6.50	3.62	C/F	4.00	5.00	.50 x .88	.12	.12	1.50	#24, 17/8-12 UN-2B	1.00		3.56		11.12	18.38	11.75	3.25	1.69
A-1024																21.12	28.38	21.75		
A-1036																33.12	40.38	33.75		
A-1224	6.12	7.50	4.25	C/F	4.12	5.00	6.00	.50 x .88	.12	2.00	#32, 2 1/2-12 UN-2B	1.50		4.25	(6) .25	20.50	29.00	21.50	3.75	2.00
A-1236																32.50	41.00	33.50		
A-1248																44.50	53.00	45.50		
A-1260	8.00	9.75	5.62	C/F	5.38	7.00	8.25	.62 x 1.12	.19	3.00	—	2.00		6.00		56.50	65.00	57.50	5.25	—
A-1624																19.00	30.75	20.50		
A-1636																31.00	42.75	32.50		
A-1648	8.00	9.75	5.62	C/F	5.38	7.00	8.25	.62 x 1.12	.19	3.00	—	2.00		6.00		43.00	54.75	44.50	5.25	—
A-1660																55.00	66.75	56.50		
A-1672																67.00	78.75	68.50		

*SAF-1200 5.88. **SAF-1600 7.38.

NOTE: We reserve the right to make reasonable design changes without notice. Consult factory. All dimensions are inches.